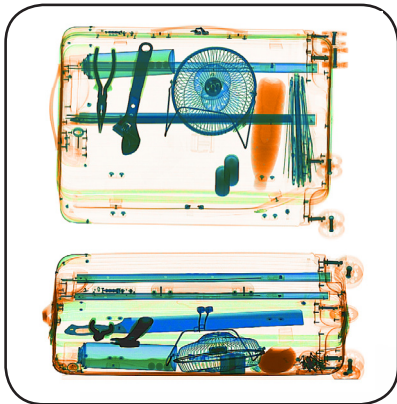


Dual View X-ray Inspection System ZKX100100D



Highlights

- Dual-view technology
- Widely usable for carry-on baggage
- Identify overlapping items easily

Standard

- Fingerprint console board
- Dual monitor operation desk
- Bi-directional scanning

Optional

- Face recognition
- Energy saving function
- Rat expelling function
- Video surveillance

Introduction

ZKX100100D is a dual view x-ray security inspection equipment. ZKX100100D could display horizontal and vertical images by two independent generators, and could detect organic, inorganic or mixtures quickly according to the effective atomic number of objects those are been detected. ZKX100100D could identify overlapping items and contraband easily and precisely.

ZKX100100D X-ray inspection system increases the operator's ability to identify potential threats; the device is designed to scan large size baggage. ZKX100100D has innovative biometric identify function for operators, improving the security of system and preventing operator from forgetting password.

With ergonomic modern design, ZKX100100D could help operators to identify suspicious items fast and accurately.

Specifications

Tunnel Size	W1018mm × H1010mm
Speed	0.20~0.40 m/s
Height of Transmission Belt	300 mm
Maximum Load	≤200 kg (Adequate distribution)
Wire Resolution	Bottom Generator: 38AWG\Side Generator: 38AWG
Space Definition	Horizontal Φ1.0mm \ Vertical Φ1.0mm
Penetrate Definition	Bottom Generator: 35AWG\Side Generator:35AWG
Penetration	Bottom Generator: 35mm\Side Generator: 35mm
Monitor	21.5 inch LED x 2
System Function	High density alert, Explosive/ Drug auxiliary detect, TIP, Luggage counter, date/time display, User management, Training.
Film Safety	ASA/ISO1600 standard of film safety

X-ray System

Tube Voltage	160KV
Cooling	Seal oil cooling / 100%
Single Inspection Dosage Rate	1.0 μ Gy
Radiation Leak Dosage	1.0 μ Gy/h (5cm from the surface)

Installation Specification

Package Size	L2850mm× W1950mm× H2050mm
Console Desk Size	L1320mm × W900mm × H1320mm
Package Weight	1570KG+135KG (Console desk)
Power Consumption	1.5 kVA
Noise	55 dB(A)

Dimension

